

- GENERAL NOTES:**
- SEE ARCH REFLECTED CEILING PLANS FOR EXACT CEILING DEVICES COORDINATE EXACT PLACEMENT OF ELECTRICAL DEVICES W/ CEILING ELEMENTS AND MECH EQUIPMENT.
 - CONTRACTOR TO PROVIDE QUANTITY OF CONDUITS AS SHOWN ON THIS PLAN. CONTRACTOR SHALL PROVIDE CONDUIT AS WHEN RUNNING CONDUIT IN PARALLEL AND PERPENDICULAR PATHS TO BUILDING ELEMENTS.
 - ALL PAINTING OF ALL EXPOSED CONDUIT WILL BE BY THE G.C. AND WILL MATCH SURFACE UPON WHICH IT IS ATTACHED.
- CIRCUITRY/LIGHTING CONTROL NOTES:**
- REMODEL AREAS:
A.A. DETRIMENT EXISTING CIRCUITS AND PROVIDE NEW FROM EXISTING PANEL(S) SERVING EACH AREA.
 - "EMERGENCY" LIGHTING FIXTURES ARE TO BE BATTERY BACK-UP TYPE.
 - NEW ADDITION:
B.A. NORMAL: 120 VOLT CIRCUITS ARE TO BE FED FROM NEW PANEL, AS INDICATED BY OUTLINED DASHED LINES AND NOTES (UNO).
 - NORMAL: 277 VOLT CIRCUITS ARE TO BE FED FROM LINES AND NOTES (UNO).
 - EMERGENCY LIGHTING FIXTURES ARE TO BE FED FROM NEW INVERTERS (S).

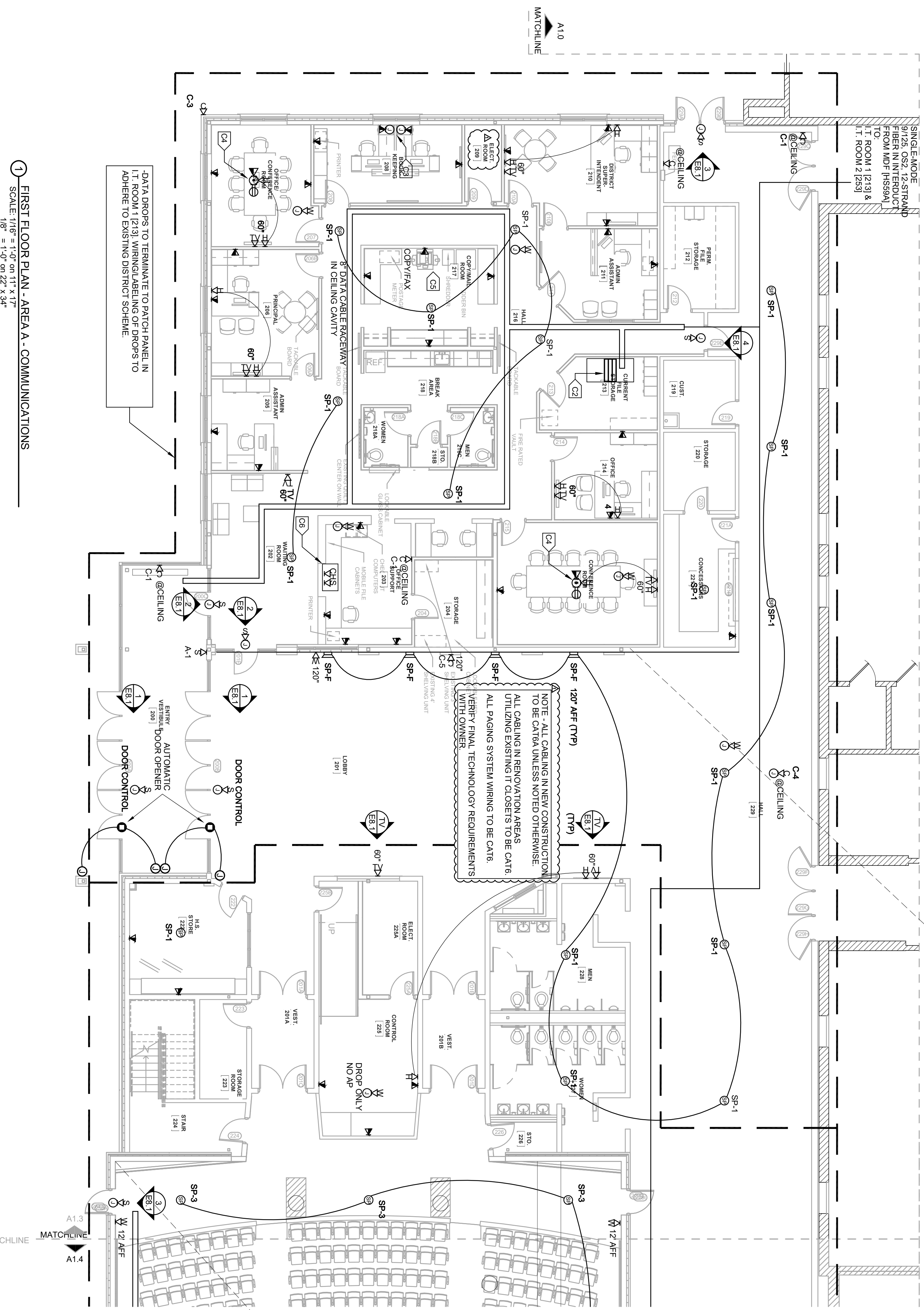
- SPECIFIC NOTES - DEMOLITION**
- DISCONNECT AND REMOVE ALL EXISTING ELECTRICAL DEVICES AND LIGHT FIXTURES IN THIS AREA UNLESS NOTED OTHERWISE (IE: ETR - EXISTING TO REMAIN).
 - SEE NEW PLAN FOR REMODEL DESIGN.
 - UTILIZE EXISTING CIRCUIT(S), AND PROVIDE NEW FROM EXISTING LOCAL PANEL(S) AS INDICATED ON NEW FLOOR PLAN.
- SPECIFIC NOTES - COMMUNICATIONS (LV)**
- HOME RUNS AND CONDUITS ARE SHOWN FOR OVERRIDING OR MORE EXACT INTENTIONS.
 - SEE LIGHTING DRAWINGS FOR MOTORS (IE: EFS).
 - SEE LIGHTING DRAWINGS FOR LOCAL LIGHTING CONTROLS.
 - TYPICAL FIXTURE TYPE AND CIRCUIT NUMBER:
A1 - FIXTURE TYPE
10 - CIRCUIT NO.

- SPECIFIC NOTES - COMMUNICATIONS (LV)**
- PROVIDE WIRING FROM LV DEVICES IN THIS AREA TO EXISTING LV ROOM.
 - PROVIDE DATA RACK, PATCH PANEL, SWITCHES, WIFI & PAGING EQUIPMENT & JUNK LINK TO EXISTING NETWORK INSTALLED IN EXISTING CONSTRUCTION. CABLES AND JACKS SHALL BE 4-PAIR CATEGORY 6. ALL EQUIPMENT SHALL BE OF MANUFACTURER AND LOCATION AS COORDINATED WITH SCHOOL DISTRICT'S MIS SERVICES MANAGER. INSTALLATIONS SHALL BE IN ACCORDANCE WITH THE DISTRICT'S STANDARDS FOR NETWORKS. PROVIDE ONE 120V, 20A DEDICATED CIRCUIT FOR DATA RACK. VERIFY REQ. W/ OWNER.
 - PROVIDE (2) DATA DROPS PER SEAT INSTALLED TO MODULAR FURNITURE SYSTEM.
 - PROVIDE FLUSH FLOOR BOX WITH POWERS OUTLET AND LOW VOLTAGE (LV) JACKS. SEE POWER DRAWINGS FOR DEVICES TYPICAL PROVISIONS: $\frac{1}{2}$ "
 - ANALOG FAX COMMUNICATION LINE TO BE PATCHED TO THIS LOCATION TO SERVE FAX MACHINE.
 - CAREHAWK DA1 MASTER CONSOLE AND APHONE (X)XW MASTER STATION LOCATED HERE. CAREHAWK CONSOLE TO BE PATCHED TO CH1000 CABINET.

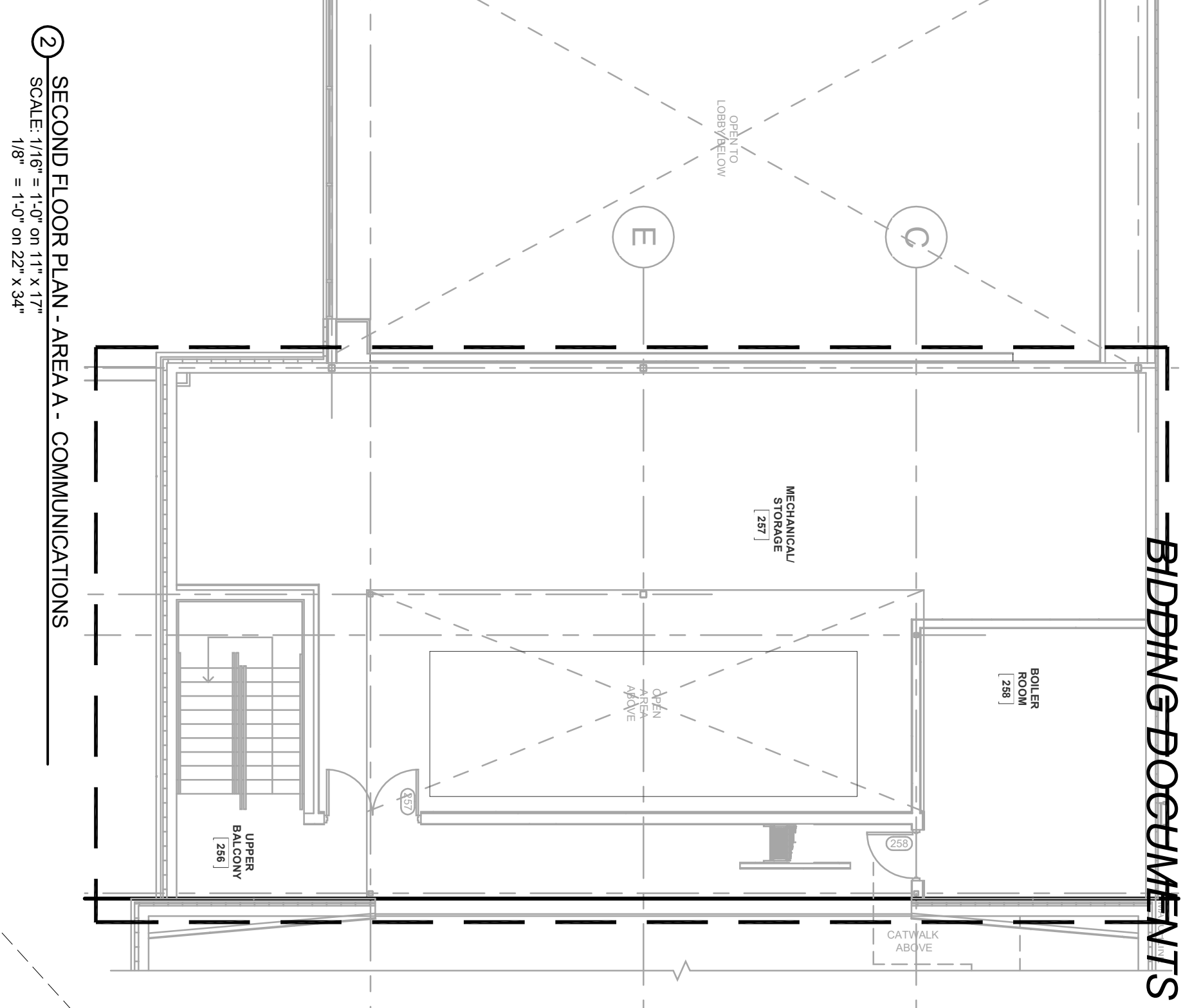
DIVISION OF WORK NOTE:

THE FOLLOWING IS A GENERAL OVERVIEW OF THE WORK BETWEEN THE GC AND THE OWNERS LV SUBCONTRACTORS (COORDINATE ALL SPECIFICS WITH GENERAL CONTRACTOR PRIOR TO BID):

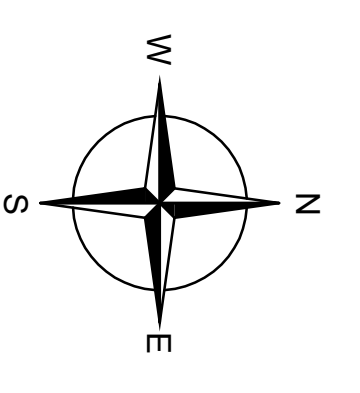
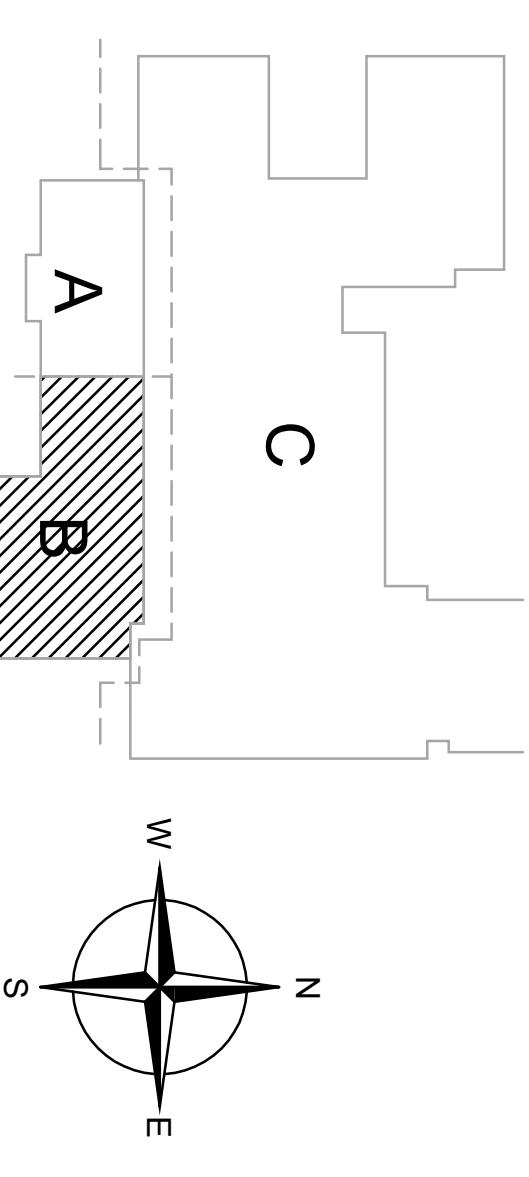
- EC TO PROVIDE:
 - 1. EC TO PROVIDE:
 - ALL WIRING, INCLUDING FIBER
 - RACKS IN IT ROOM
 - PATCH DOWN MODULES
 - WIRING IN HEAD END ROOM SHALL BE TERMINATED WITH ID AND COIL OR SCHEME TO MATCH THE EXISTING OWNER SYSTEM
 - ALL WALL MOUNTED DATA OUTLETS
 - ALL OTHER END OF WIRING LINES SHALL HAVE 10' EXTRA SLACK FOR OWNERS VENDOR TO PROVIDE FINAL DEVICE AND CONNECTION
 - BACK BOXES FOR SPEAKERS (COORDINATE WITH OWNERS VENDOR FOR SPECIFIC TYPE)
 - VENDOR FOR SPEAKERS TO SUPERVISOR AND OWNERS VENDORS TO PROVIDE TO GC IN ORDER TO COORDINATE WORK AND SEQUENCE OF INSTALLATION
 - 2. OWNERS VENDORS TO PROVIDE ALL END OF LINE DEVICES (EXCEPT FOR WALL DATA OUTLETS); SWITCHES AND OTHER EQUIPMENT IN HEAD END ROOM; PROGRAMMING, ETC.



1 FIRST FLOOR PLAN - AREA A - COMMUNICATIONS
SCALE: 1/16" = 1'-0" ON 11" X 17"
1/8" = 1'-0" ON 22" X 34"



2 SECOND FLOOR PLAN - AREA A - COMMUNICATIONS
SCALE: 1/16" = 1'-0" ON 11" X 17"
1/8" = 1'-0" ON 22" X 34"



REVISIONS	NO.	BY	DATE
ISSUED FOR BID		BVE	2/26/2018
As indicated			
DRAWN BY	BVE	REVIEWED BY	BVE
ISSUE DATE	02/26/2018	GEC FILE NO.	2-0815-308
SHEET NO.	E5.1A		

COMMUNICATIONS FLOOR PLAN A
Pardeeville Areas School District
120 OAK STREET
VILLAGE OF PARDEEVILLE
COLUMBIA COUNTY, WI 53954

BEAR VALLEY ENGINEERING, INC.
COMMERCIAL BUILDING SPECIALISTS

cmg8
ARCHITECTS - INTERIOR DESIGN - PLANNING

RIEDEL
hear the difference

DIMENSION
Madison Design Group
architects - interior design - planning

General Engineering Company
P.O. Box 340 • 916 Silver Lake Dr. • Portage, WI 53901
608-742-2169 (Office) • 608-742-2592 (Fax)
www.generalengineering.net

This document contains confidential or proprietary information of General Engineering Company. Neither this document nor the information herein is to be reproduced, distributed, used or disclosed either in whole or in part except as specifically authorized by General Engineering Company.

GEC